

## SCIFTRONICS™

“Helping keep information safe in an unsafe world.”™

## SCIFALERT™

### MASTER CONTROL PANEL (MCP)



#### Industry Standards

- NEMA/EEMAC Type 1 cabinet
- UL50, 50E listed cabinet
- UL-recognized transformer, relay components
- UL 294-recognized for Access Control Systems main power supply

#### Features

- DCID 6/9 compliant
- JFAN compliant
- TEMPEST compliant
- Surface or semi-flush mounting
- ANSI 61 gray polyester powder over posphatized cabinet surface
- Integrated open-frame transformer
- Two 24VDC/1.75A class 2, power-limited, continuous supply outputs
- Power conditions indicated by on-board colored LED indicators
- PTC protected, electronically filtered and regulated output voltages
- 28vdc DPDT contacts total draw 43mA
- Internal short-circuit and thermal overload protection
- Main power supply auxiliary form “C” output rated 1A at 28VDC
- Internal programmable “Green Timer” feature limits IDC activation cycle to client’s exact specification
- Green timer range is selectable from 1 sec minimum to 60 minute maximum
- DIN-rail mount components
- Locking housing
- Expandable to virtually unlimited numbers of inputs and outputs
- Removable perforated panel allows quick-change of components or configuration change
- Factory training and certification available
- Unconditional one-year warranty on all components

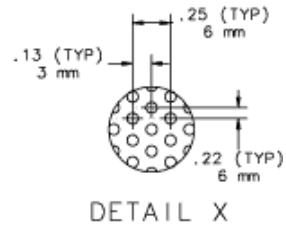
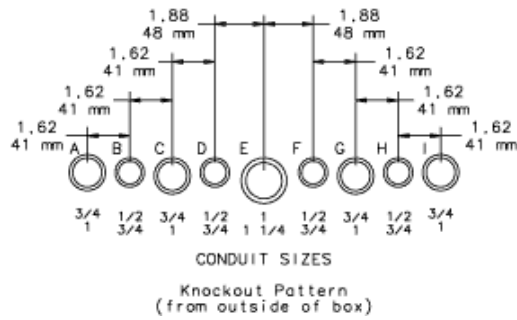
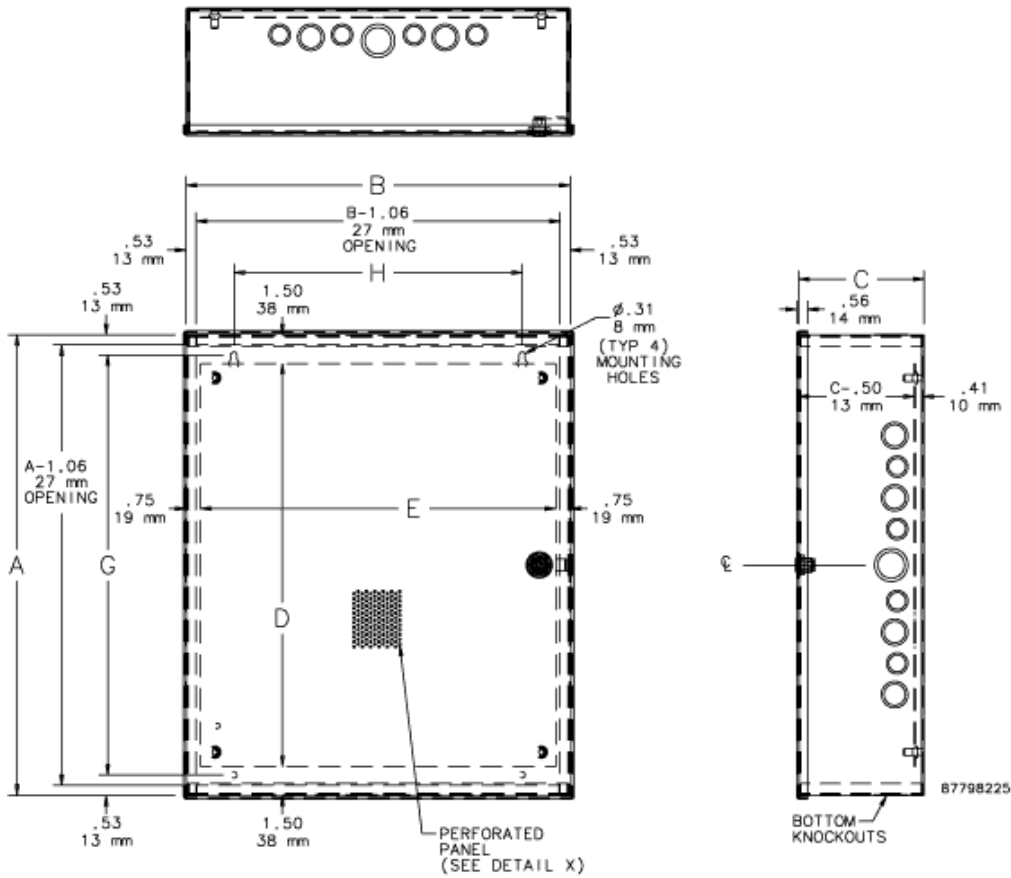
#### Ordering Information

<u>Part Number</u>	<u>Description</u>
A002-1200-514	ScifAlert™ Master Control Panel (MCP)

#### Compatible Accessories

<u>Part Number</u>	<u>Description</u>
F001-1206-301	SanitizeAlert™ Series Master System Initiation (MSI) field device
F001-1206-321	SanitizeAlert™ Series Compartment Shunt Initiation (CSI) field device
F002-0714-40x	SanitizeAlert™ Series of Indicating Appliances (available in various colors; see website for more information)

# Cabinet Dimensions



**SCIFTRONICS™**  
 BY DAVIS SPECIALIZED, INC.

312 West Hampton Avenue  
 Sumter, SC 29150  
 803-236-9899  
 www.sciftronics.com

